



March 14, 2022

Pittsfield Charter Township

Attn: Matt Best

6201 Michigan Ave

Pittsfield Township, MI 48176

Re: Proposed Street Lighting at Maple and Ann Arbor Saline Rd.

We have completed our review of your request for proposed lighting and have prepared a cost estimate for the installation of three 136w LED roadway streetlights on three new wood poles. Pittsfield Township, Washtenaw County.

The costs are based on the Edison Option I rate, where Detroit Edison installs, owns, and maintains the lighting system. The rate requires a portion of the construction cost be paid by the customer, which is determined by the following formula.

**Maple and Ann Arbor Saline Rd Three Fixtures and Three Wood Poles**

Cost to construct	\$5,512.00
Minus 3yrs revenue	(\$2,403.00)
Contribution from	
(Pittsfield Township)	<b>\$3,109.00</b>
Annual operating cost	\$801.00

The price quoted herein shall be in effect for period of six months from the date hereof. After installation the total cost for additional modification, relocation or removal will be the responsibility of requesting party. The sum of \$ 3,109.00 will be made prior to the actual start of construction. Please request an agreement for Municipal Street Lighting if you would like us to proceed with the installation or call me with any questions at 313-618-6996.

Sincerely,

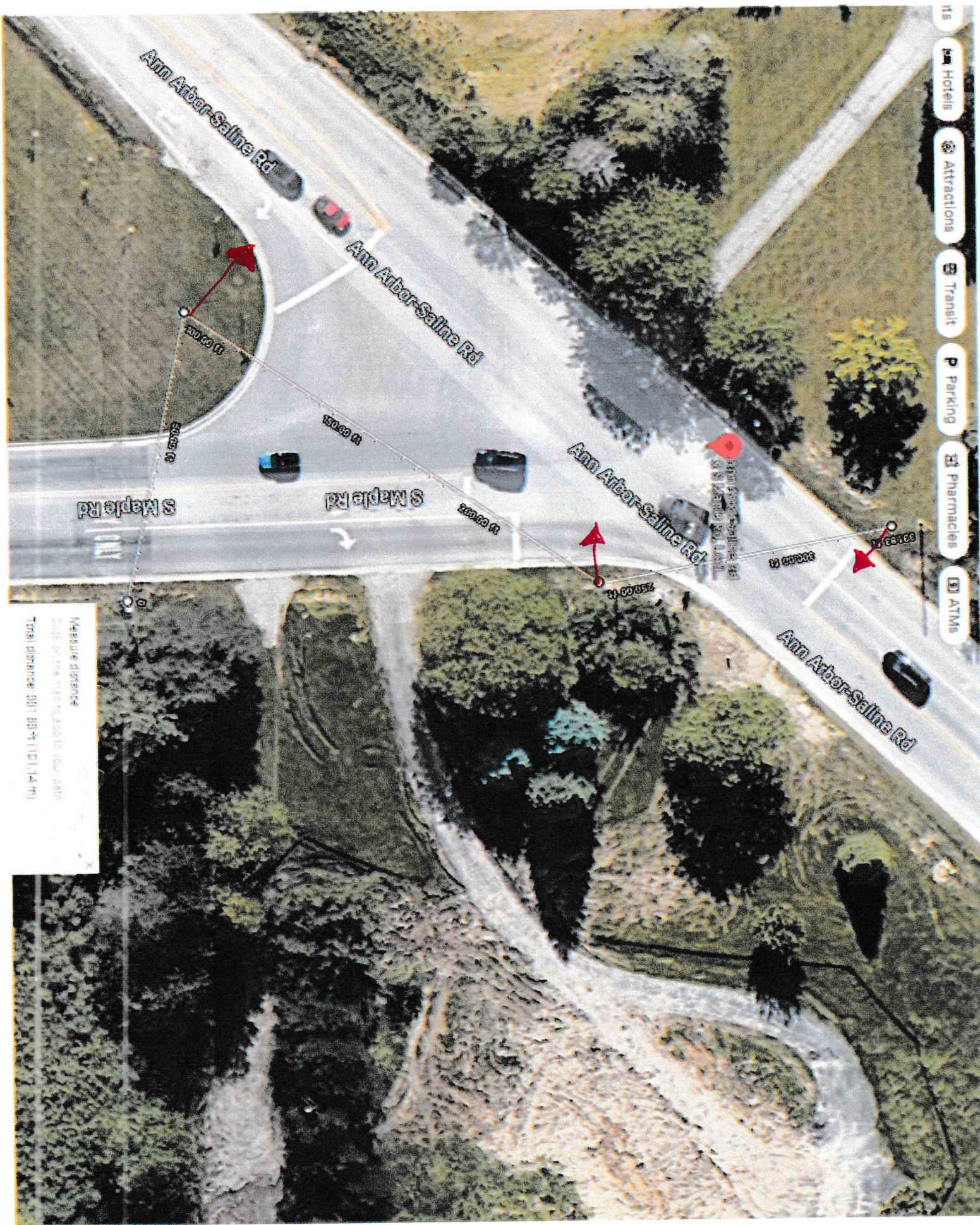
*Debra J. Cain*

Debra J. Cain

Principal Account Manager

Community Lighting





- its
- Hotels
- Attractions
- Transit
- Parking
- Pharmacies
- ATMs

Measure distance  
Click on the map to add to your route  
Total distance: 391.00 ft (120.14 m)