



**Pittsfield Charter Township**  
**Department of Parks & Recreation**

701 West Ellsworth Road, Ann Arbor, MI 48108  
Phone: (734) 822-2120 • Fax: (734) 996-3015  
Website: [www.pittsfield-mi.gov](http://www.pittsfield-mi.gov)

**Mandy Grewal, Supervisor**

September 30, 2021

Keith O. Smillie  
DeLoof Dever Eby, PLLC  
301 N. Main Street, 2<sup>nd</sup> Floor  
Ann Arbor, MI 48104

Pittsfield Charter Township Senior Center  
Proposal for Helen McCalla Trust 2021

Dear Mr. Smillie,

The Pittsfield Township Community/Senior Center serves as a multipurpose gathering space for nearly 9,000 community members. In addition to annual community events, youth and adult programs, and recreational leagues, the community center hosts a vibrant Senior Center program that serves nearly 750 members from Pittsfield Township and over a dozen communities in the surrounding region. We thank you for your continued support in helping the Pittsfield Township Senior Center provide meaningful opportunities for enrichment, wellness, and education for participants 50 and older. Regular activities have included day trips and outings; social clubs that revolve around hobbies such as flower arranging, painting, and dancing; classes to explore new skills and encourage personal growth, including learning new languages, computer skills, and tools for financial investment; and wellness activities such as flu shots from visiting nurses, nutrition programs providing grab-and-go lunches and frozen meals, and tai chi. Adjustments in programming have been made to ensure the health and safety of our seniors during the pandemic. Even in the face of the many challenges of the last year, we have retained a tightly-knit and engaged group of seniors.

Pittsfield Charter Township covers an area of 27.4 square miles and sits just south of the City of Ann Arbor. With a population of over 39,000, Pittsfield is home to over 4,600 seniors 65+ according to the 2020 U.S. Census and 2019 ACS. SEMCOG (Southeast Michigan Council of Governments) predicts an increase in Pittsfield's senior population to over 11,800 by 2045. Continuing to develop facilities and services in ways that thoughtfully address the needs of our expanding aging population remains imperative. The central location of the Pittsfield Township Community/Senior Center and its proximity to the City of Saline, Ann Arbor, Ypsilanti, and Ypsilanti Township, allows the proposed improvement of this facility to benefit seniors in the surrounding communities of Washtenaw County and the Southeast Michigan Region.

As a governmental agency, Pittsfield Charter Township is considered a 501(c)(3) public charity by the Internal Revenue Service. Our [Annual Report](#) may be viewed online.

**Deliverable: Community Connection Outdoor Space**

Install a vibrant outdoor patio area at the Pittsfield Township Community/Senior Center located at 701 W. Ellsworth Road, Ann Arbor, MI 48108. This type of project was identified as a high priority by the seniors during the 2016 master planning process. It would be extremely gratifying, emerging from the pandemic, to deliver an outdoor space, nestled in the midst of greenscapes including the vegetable garden, for seniors to gather.

A 31'x17' (approximately 543 sq. ft.) grass area currently exists adjacent to an exterior wall of the building. Our proposal is to install a paved patio area furnished with umbrellas, tables, and chairs, and surrounded by raised bed herb and flower gardens. We intend to recycle the wood from the trees cleared in this area (they were in declining condition) for seating, tables, and other purposes to align with the 'green' aesthetic of the patio design. The design will be accessible and comply with all Michigan barrier-free rules.

Over the course of the last year, we've worked diligently to continue to provide seniors in our community with safe opportunities for enrichment. While our programs have been valuable and appreciated, it has also become clear that one of the things participants want the most is the opportunity to socialize and connect. Outdoor areas in the fresh air, while important before the pandemic, have become an even more critical part of allowing seniors to mingle, interact, and find their 'home away from home' at the Pittsfield Township Senior Center.

**Request:**

Patio	\$13,575.00
Furniture	\$12,421.84
Tables (3)	
Umbrellas (3)	
Chairs (12)	
Total Request	<b>\$25,996.84</b>

**Impact:**


Our proposed improvements will help provide seniors with one of the most critical human needs, the need for interpersonal and social connections. Studies show that socialization and connecting with others has a meaningful impact on wellness and longevity, and providing our participants with a safe place for unstructured interaction has been one of our most frequent requests since the pandemic began. With the many changes to how people are able to gather due to the pandemic, having an outdoor space in the midst of greenscapes that is conveniently located and easily accessible has become more important than ever. Seniors would be able to use the space to eat lunch, enjoy activities outdoors, or just to visit with friends. An accessible, inviting area with a woodsy/green aesthetic surrounded by gardens out in the fresh air will provide more than a pleasant place to relax, it will also respond to the need for the sort of casual, informal socializing that we took for granted before Covid-19. Your investment will help us create a special, welcoming place for our seniors to connect with nature and each other.

Thank you very much for your consideration of our proposal. Included in this proposal are the Proposal Drawing, Furniture Estimate, Patio Estimate, Board of Trustees Listing, W-9, and a Tax Certificate of Exemption. The raised garden beds included on the plan will be completed in house. Please see below for some images from the center today, as we're currently in the process of clearing the space where our proposed upgrades would take place. This is just part of our commitment to an active partnership to expand our offerings for seniors in Pittsfield and the surrounding areas. The improvements that would be possible with your generous support would provide our participants increased opportunities for engagement and connection in a safe and welcoming outdoor environment.



Thank you for your consideration.

Sincerely,

  
Mandy Grewal, Ph.D.  
Supervisor

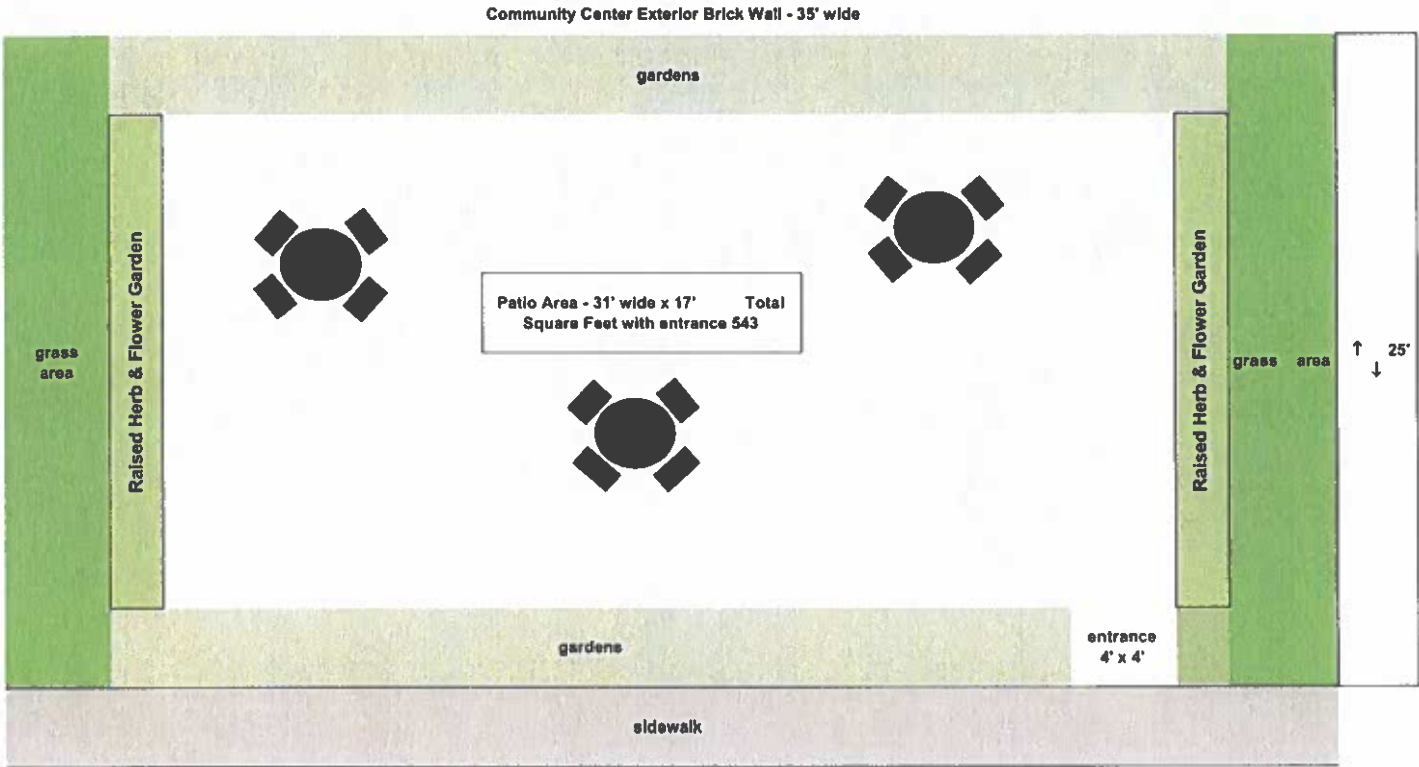
Attachments:

- #1 Proposal Drawing
- #2 Patio Estimate
- #3 Furniture Estimate
- #4 W-9
- #5 Internal Revenue Service Tax Exemption Letter
- #6 Board of Trustees



Community/Senior Center - Connect Outdoors Proposal

9/30/21





2708

## Community Center Patio



## Prepared By

Chris White

Aaron's Lawn Care, Inc.

3802 Bemis Rd.

Ypsilanti, MI 48197

[cwhite@aaronslawncare.com](mailto:cwhite@aaronslawncare.com)

Phone: 734-528-1516

## Prepared For

Pittsfield Charter Township

6201 W. Michigan Ave.

Ann Arbor, MI 48108

734-822-3127

Estimate No. 2708

Prepared Date September 28, 2021

## Estimate Items

ITEM DESCRIPTION	QTY	PRICE PER UNIT	TOTAL PRICE
-Prep area by removing sod and excavating area for base material.	1	\$13,575.00	\$13,575.00
-Install 4-6in of compacted 26a limestone.			
-Install 1in of leveling sand.			
-Install paver patio using Baystone MLR in Au Gres color from Fendt.			
-Pattern will be typical brick laid pattern.			
-Install Jet Black 4x8 Holland soldier course.			
-Patio will be 17ft x 31ft.			
-Repair damage to lawn using soil, seed, and starter mulch.			
-Haul away and dispose of debris.			
-Any irrigation relocation or repair will be billed separately at \$65 hr per person plus parts.			

## Estimate Summary

Total Due

**USD**  
**\$13,575.00**

## Estimate Notes

All landscape jobs require a 50% deposit to schedule and the remaining 50% is due at completion. Client accepts that Aaron's Lawn Care Inc. cannot be held responsible for any unforeseen anomalies including but not limited to cable

