



Pittsfield Charter Township

6201 West Michigan Avenue, Ann Arbor, MI 48108

Phone: (734) 822-3135 • Fax: (734) 944-6103

Website: www.pittsfield-mi.gov

Office of the Supervisor

MEMORANDUM

TO: Pittsfield Charter Township Board of Trustees

FROM: Mandy Grewal, Supervisor

DATE: January 13, 2021

SUBJECT: Response to Questions Raised at the 12/9/2020 Board meeting

Clerk Anzaldi brought to my attention the questions she'd posed at the December 9th Board meeting. In response to the same, which I have also provided via email to Board members, along with the Chair and Vice Chair of the Park Commission, are included herein:

1. Question about the Pittsfield Post article

Not sure why the confusion since the green parcels denoted in the map are those that are currently – and have been since I took office in 2008 – farmed. In fact, the map delineates both the total and farmable acreage of each of these parcels that have, I believe, been farmed by McCalla for which the lease agreement is handled through the Clerk's office and which, then, the Clerk has brought before the Board for approval periodically. The parcel (not a park) shown in hash-marks is what relates to "...our vision is to make available..."

2. Request to include Park Commission

Based on the assumption that they are excluded whereas, while numerous projects were undertaken and completed including addition of three public parks between 2009-2016, the one and only time Township administration has 'encroached' upon Pittsfield park space, in the past few years, was to install one community garden. For this initiative, which I finally spearheaded due to ongoing public demand for the same, my team was very diligent to, from the beginning, engage and inform Park Commission (including through formal presentations at Park Commission meetings) of the community garden initiative. I believe lack of attendance at public forums (e.g., February 2019 for Waters/Oak Valley, June 2020 for PRGII, November 2020 for MI Ave) by elected is likely one of the reasons assumptions/statements of exclusion are being made. We have taken the lead of the public for decision-making but based on your and other comments recently, I have requested some of the more recent public forum presentations be repeated at Board meetings, starting in 2021

Thank you.

From: Forest Yang
Sent: Wednesday, January 6, 2021 11:39 AM
To: Mandy Grewal
Subject: Service Update from TheRide

Hi Mandy,

Happy New Year!

I would like to provide you a quick update on our service and ridership:

- Since September 2020, TheRide has been operating approximately 65% of pre-pandemic service hours and the ridership has been about 25% of pre-pandemic level. As you can tell, the majority of our riders are still not back considering that we are still in the middle of a pandemic. Hopefully things will get better soon.
- After the temporary service plan was introduced in August 2020, TheRide restored a local route (26) in the west side of Ann Arbor to fill in a large service gap in that area. In January 2021, minor changes will be made to address some on-time performance issues. There is currently no planned service change in Pittsfield Township until fall 2021.
- TheRide is working on a service restoration plan to restore most services by fall 2021 and more details will be shared in late February/early March.

Please let me know if you have any questions or need any additional information.

Thanks,

Forest



Forest Yang (he/him)
Deputy CEO, Planning and Innovation
TheRide // Ann Arbor Area Transportation Authority

MLive

PPE giveaway aims to hand out 2,500 masks in Ann Arbor area

By Samuel J. Robinson - December 08, 2020



Montibeller Park in Pittsfield Township, Mich. Melanie Maxwell

WASHTENAW COUNTY, MI — Pittsfield Township residents needing safety equipment to help in the fight against the COVID-19 pandemic can get it this weekend in Montibeller Park.

The personal protection equipment giveaway is from 11 a.m. to 1 p.m. Saturday, Dec. 19, inside the park's pavilion at 305 Ellsworth Road. Bags filled with masks and other products will be distributed. Residents can take up to two free bags per car while supplies last.

Three hundred bags will include five disposable face masks and hand sanitizer and another 200 bags will contain five face masks without hand sanitizer. The event is organized by township trustee Linda Edward-Brown, and the equipment gathered is being distributed by members of the Rho Delta Zeta Chapter of Zeta Phi Beta Sorority, Inc.

"We are extremely grateful for the generosity and support of phenomenal community groups, such as the Rho Delta Zeta Chapter of Zeta Phi Beta Sorority, Inc., who have stepped up to help our community at a time of dire need," Pittsfield Township Supervisor Mandy Grewal said.

Community Availability

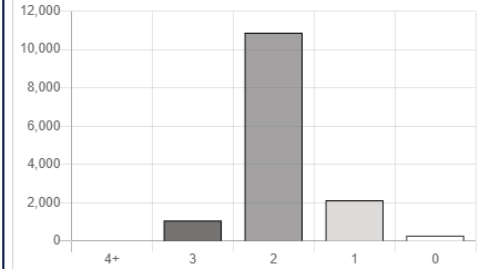
Broadband availability shows estimated residential fixed, non-mobile terrestrial service.

14k (99.3%)
households with broadband available

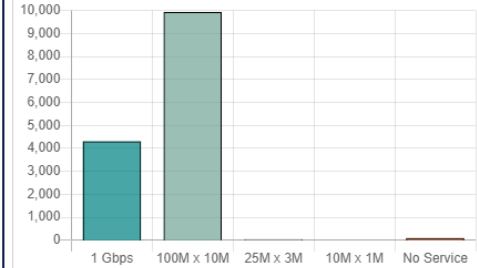
14k (99.0%)
households with fast broadband available

99 (0.7%)
households unserved by broadband

Households by Number of Broadband Providers



Households by Max Internet Speed



Household Population with Broadband Available



The above chart cannot be displayed at this geography.

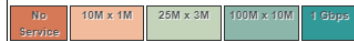
Pittsfield Twp Demographics

Total Households: 14,389
 with Children: 4,194
 with Seniors: 3,163
 Avg Household Size: 2.49
 Median Household Income: \$77,543
 Households in Poverty: 10.2%
 Total Population: 38,359
 Household Population: 35,844
 White: 22,900
 Black: 3,862
 Asian: 5,508
 Hispanic: 1,691

Selected: **Community**

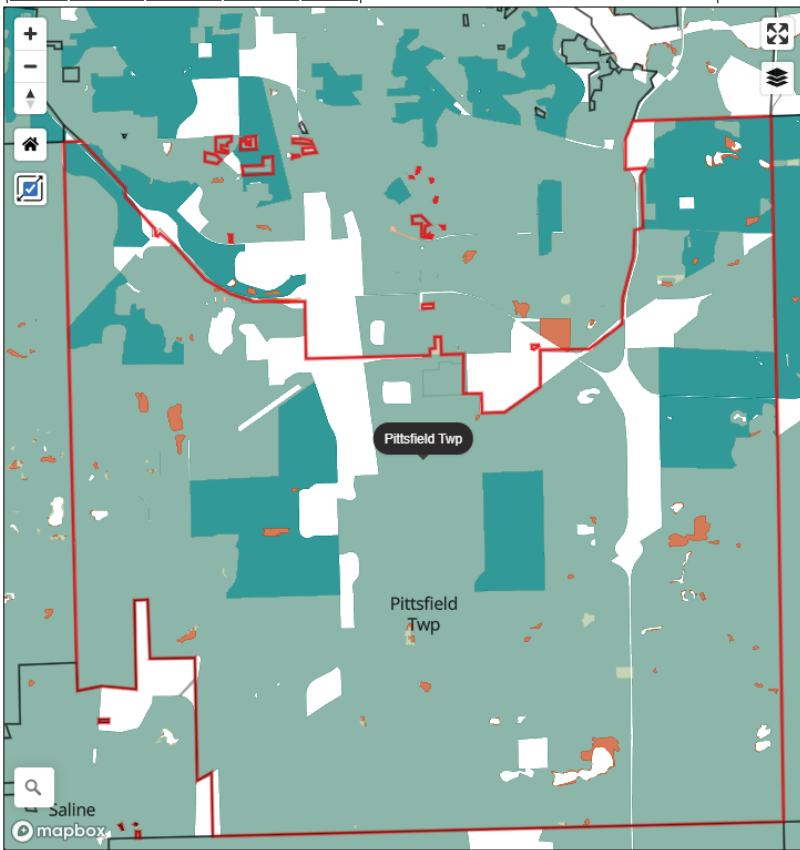
is **Pittsfield Twp**

Broadband speed available



Choose a Demographic Overlay

- ☐ WiFi
- ☐ Hotspots
- ☐ Schools



Community Usage

Broadband usage shows information about households having and using high speed, cellular, or satellite internet service.

13k (89.9%)
households use broadband

1.2k (8.2%)
households without internet

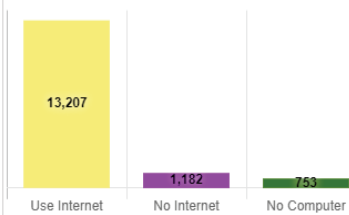
1.5k (10.4%)
households without a desktop/laptop

330 (4.3%)
children without broadband

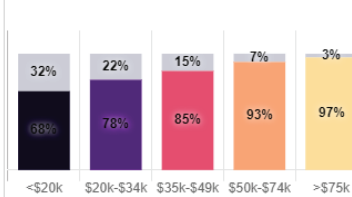
21 (0.3%)
children without a desktop/laptop

25 (0.2%)
households only use smart device

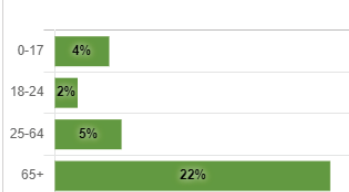
Households by Internet Usage



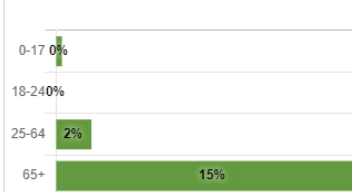
Broadband Share By Income



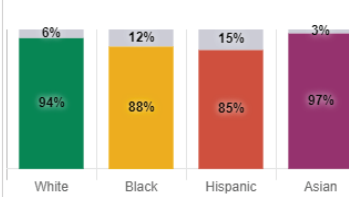
Lack of Broadband By Age



Lack of Computer by Age



Broadband Share By Race/Ethnicity



Computer Share By Race/Ethnicity

